

INSTRUCTION MANUAL

TRACTION

H O B B Y

CRAIGSMAN C

OFF-ROAD

PERFORMANCE

1/8th SCALE ELECTRIC



www.tractionhobby.com

CAUTIONS



To prevent serious personal injury and/or property damage, operate all remotely controlled models in a responsible manner as outlined herein.

CHOOSE THE RIGHT PLACE TO OPERATE YOUR R/C MODEL.

- Do not run on public streets or highways. This could cause serious accidents, personal injuries, and/or damage.
- Never run R/C models near people or animals.
- To avoid injury, do not run in confined spaces.
- Do not run where loud noises can disturb others, such as hospitals and residential areas.
- Never run indoors. There is high risk of fire and/or damage.

INSPECT YOUR MODEL BEFORE OPERATION.

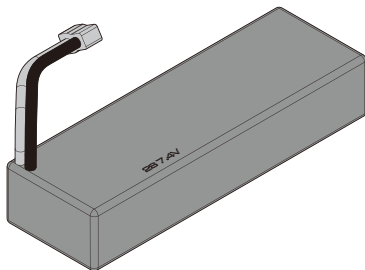
- Make sure that screws and nut are properly tightened. It is also a good idea to use removable thread lock wherever metal screws go into metal, especially for engine mounts and the engine pilot shaft.
- Always use fresh batteries for your transmitter and for your receiver to avoid losing control of the model.
- Always test the brakes and throttle before starting your engine to avoid losing control of the model.
- Make sure no one else is using the same radio frequency as you are using.

AFTER OPERATION OF YOUR R/C MODEL.

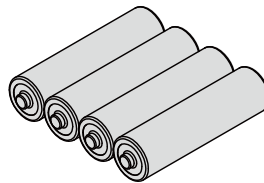
- Turn off receiver first, then turn off transmitter, this will prevent runaways.
- Be careful when handling batteries, they will be hot after running.
- Replace any batteries that have been dented or have frayed wires, short circuits can cause fire.
- Be sure to keep your R/C model clean of excess dirt and grease, this will increase the life.

Equipment needed

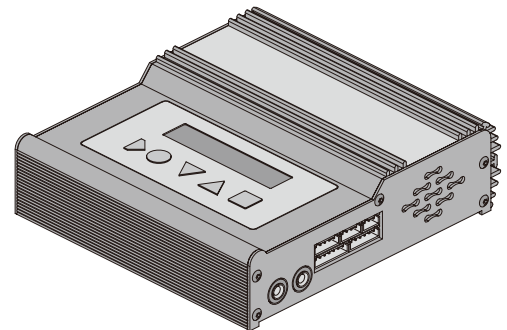
Battery Maximum Size :155mm×52mm×32mm



6 or 7-cell NiMH battery/2s-3s LiPo battery

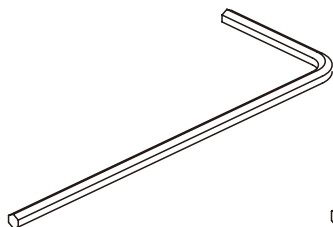


AA battery ×4

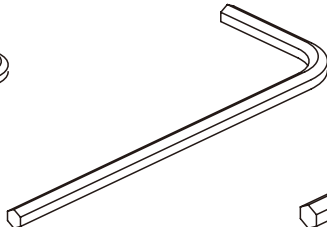


Charger

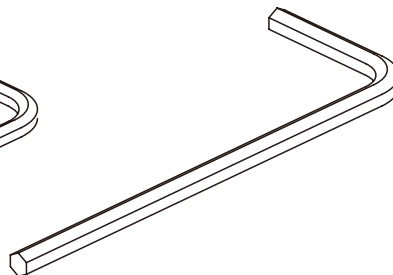
Supplied Tools and Equipment



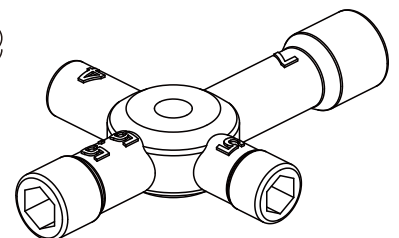
1.5mm "L" wrench



2.0mm "L" wrench

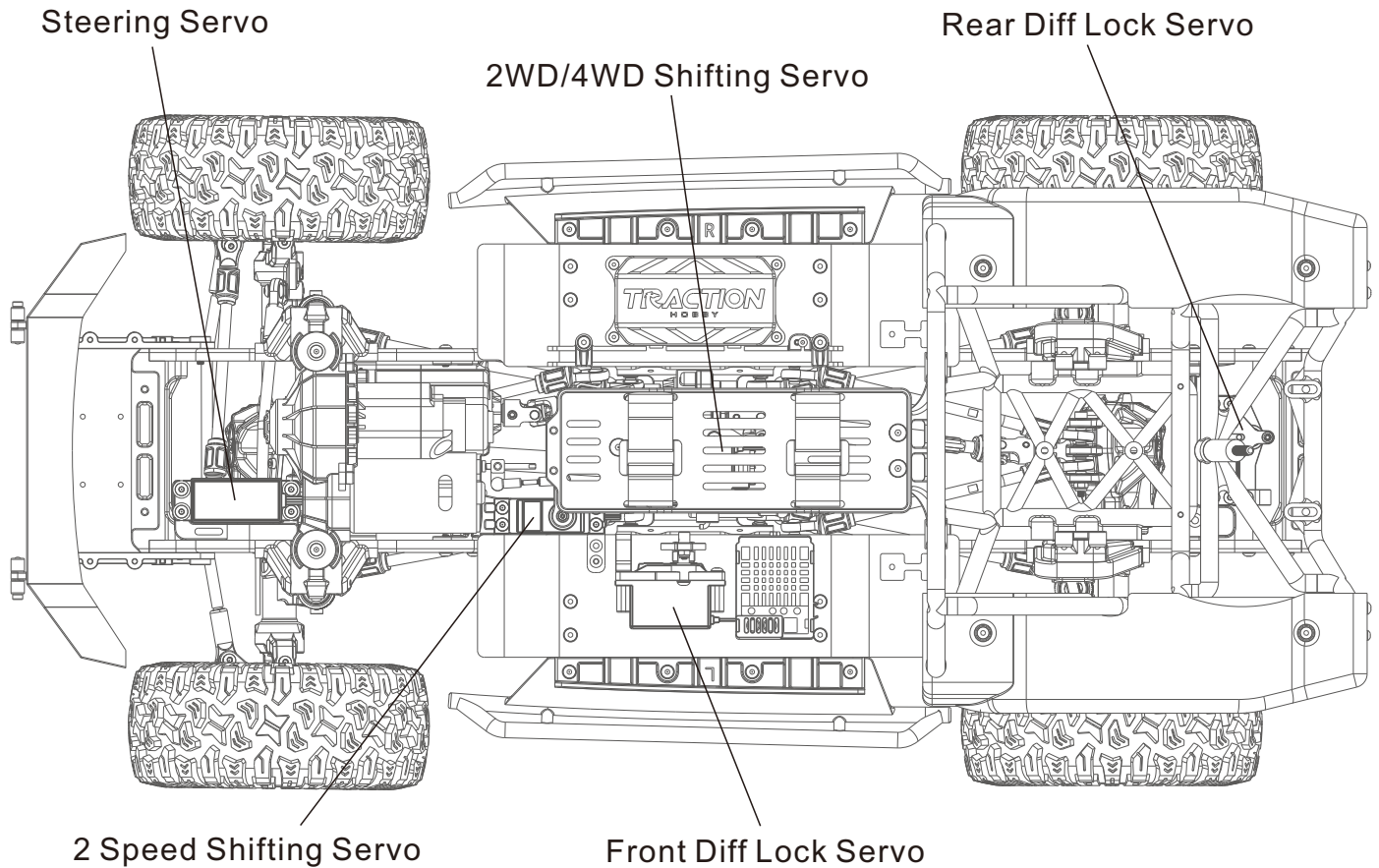


2.5mm "L" wrench



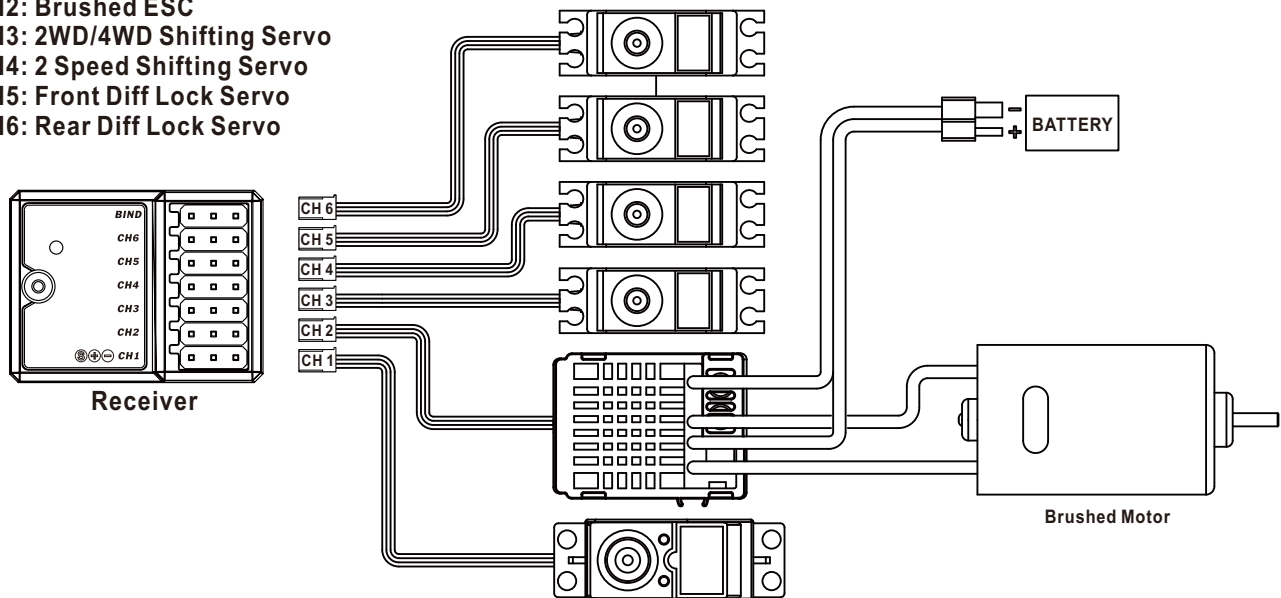
4-way wrench

Chassis top view

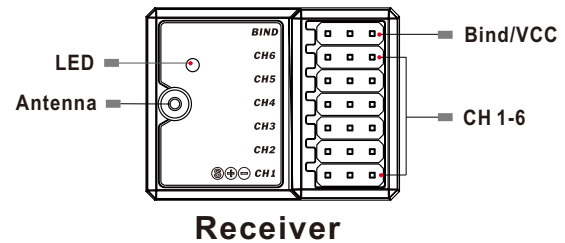
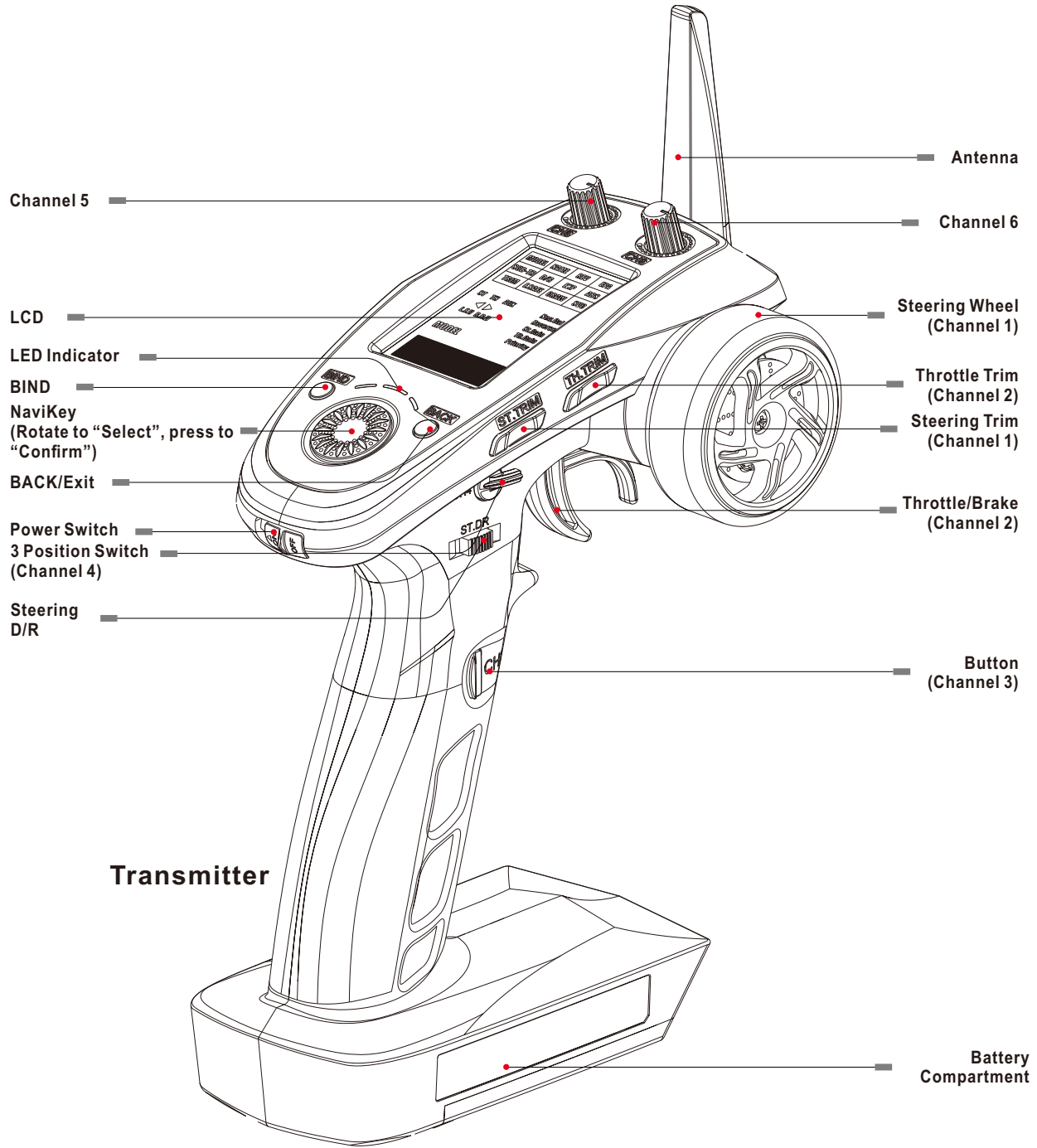


Receiver Connection

- CH1: Steering Servo
- CH2: Brushed ESC
- CH3: 2WD/4WD Shifting Servo
- CH4: 2 Speed Shifting Servo
- CH5: Front Diff Lock Servo
- CH6: Rear Diff Lock Servo



Radio Maintenance



Servo Function Maintenance(CH3-CH6)

This product's standard version is RTR. It has been adjusted and ready to run. If you accidentally reset the transmitter, change another new THT6 or servos, please read the following guide carefully!

Before setting, make sure you have already setup the CH1(Steering) and CH2(Throttle), and no other servos connected to the CH3-CH6. Make sure the car is power on, throttle servo and steering servo is active, overhead the 4 wheels to make the wheels off the ground.

● 2 Speed Shifting Servo Setting

1. Press the Navkey to enter the function menu, then rotate the Navkey to select EPA. Press the Navkey again to enter the function. The channel name and number will begin to flash.
2. Rotate the Navkey to select the AUX Channel 4 and press the Navkey to confirm the selection.
3. Move the CH4 channel control, the system will display L.F.U (Left, Front, Up) or R.B.D (Right, Back, Down) depending on the selection. Press the Navkey again to confirm.
4. Rotate the Navkey to change the both side endpoint position to 40% and press the Navkey to confirm.
5. Plug the 2-speed servo cable into the receiver's Channel 4. Please notice the place of anode and cathode, then adjusting the "EPA".
6. Increase the L.F.U (Left, Front, Up) EPA gradually of the CH4, pay attention to the state of the 2-speed servo increase to be shown as "Chart.1", the red mount is as close as possible to the gearbox and the servo has no "Zizizi" sound, else decrease the value. Then pull the throttle trigger, if the red mount's position has no change. Move the CH4 channel control of TH-GT5 to shift the servo direction, the position of the servo arm is shown as "Chart.2", increase the R.B.D (Right, Back, Down) EPA gradually of the CH4 option then pull throttle trigger a little. Repeat the step till the servo has no "Zizizi" sound, else decrease the value. Finally check the 2-speed shifting function.

MODEL	NAME	REV	EPA
SUB-TR	D/R	EXP	ABS
TRIM	F.SAFE	CRAWL	SVC



4 40%

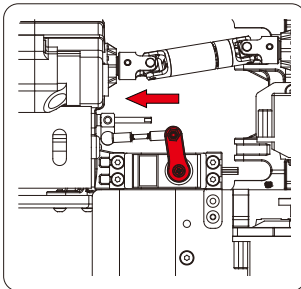


Chart.1 low speed servo state

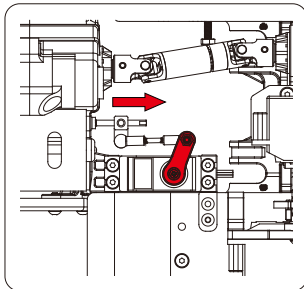


Chart.2 high speed servo state

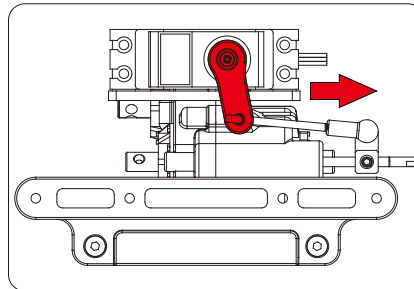


Chart.3 2WD servo state

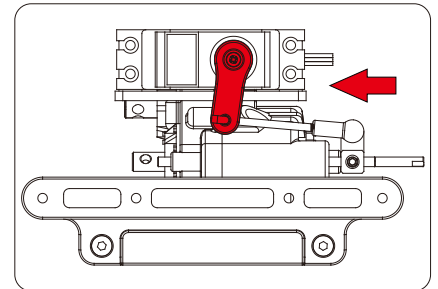


Chart.4 4WD servo state

● 2WD/4WD Shifting Servo Setting

1. Press the Navkey to enter the function menu, then rotate the Navkey to select EPA. Press the Navkey again to enter the function. The channel name and number will begin to flash.
2. Rotate the Navkey to select the AUX Channel 3 and press the Navkey to confirm the selection.
3. Press the CH3 button, the system will display L.F.U (left, front, up) or R.B.D (right, back, down) depending on the selection. Press the Navkey again to confirm.
4. Rotate the Navkey to change the both side endpoint position to 20% and press the Navkey to confirm.
5. Plug the corresponding servo cable into the receiver's Channel 3. Please notice the place of anode and cathode, then adjusting the "EPA".
6. Increase the L.F.U (Left, Front, Up) EPA gradually of the CH3, pay attention to the state of the shift servo, increase to be shown as "Chart.3", the red mount is as far away from the gearbox as possible and the servo has no "Zizizi" sound, else decrease the value. Then pull the throttle trigger, if the red mount's position has no change and the front wheels don't turn, press the CH3 button to shift the servo direction, the position of the servo arm is shown as "Chart.4", increase the R.B.D (Right, Back, Down) EPA gradually of the CH3, then pull throttle trigger a little. Repeat the step till the servo has no "Zizizi" sound. Finally check the 2WD/4WD shifting function.

MODEL	NAME	REV	EPA
SUB-TR	D/R	EXP	ABS
TRIM	F.SAFE	CRAWL	SVC



3 20%

● Front and Rear Diff Lock Setting

1. Plug the corresponding servo cables into the receiver's Channel 5 and Channel 6. Please notice the place of anode and cathode, then adjusting the "EPA".
2. Pull back the toggle switch, the diff locks, the state is shown as "Chart.5", check if the wheels turn by hand. If the wheels turn, maybe the cable is too tight, loose the set screw to adjusting the cable till the diff locks, then tighten the set screw.
3. Push the toggle switch, the diff unlocks, the state is shown as "Chart.6", check if the wheels turn by hand. If the wheels not turn, check if the cable is too tight, then check if both ends of the cable are plugged into the corresponding groove.

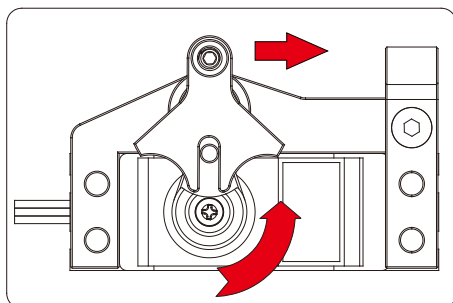


Chart.5 Diff lock servo state

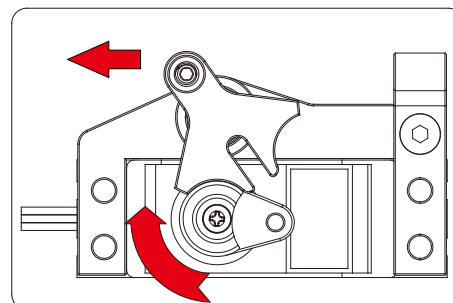
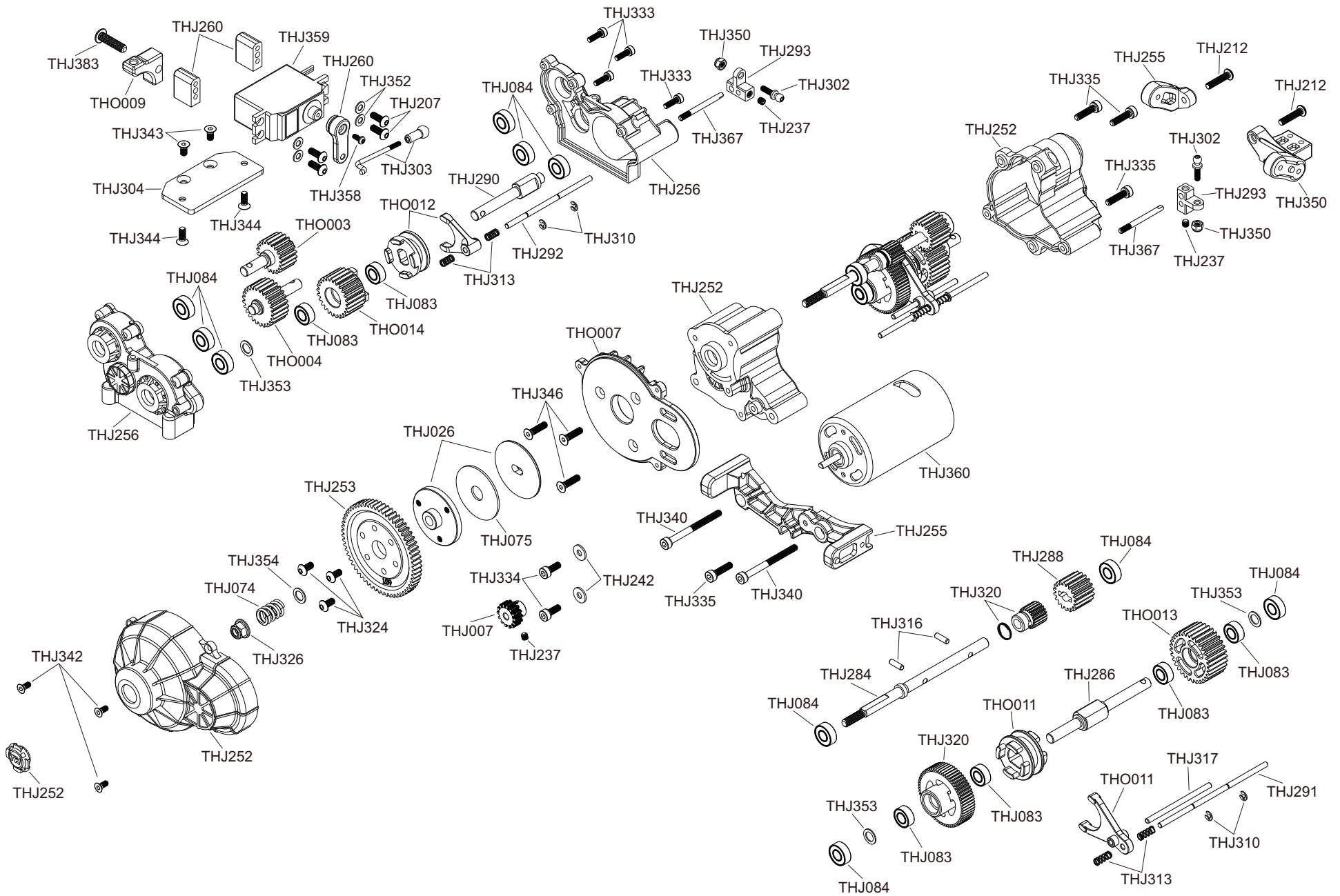


Chart.6 Diff unlock servo state

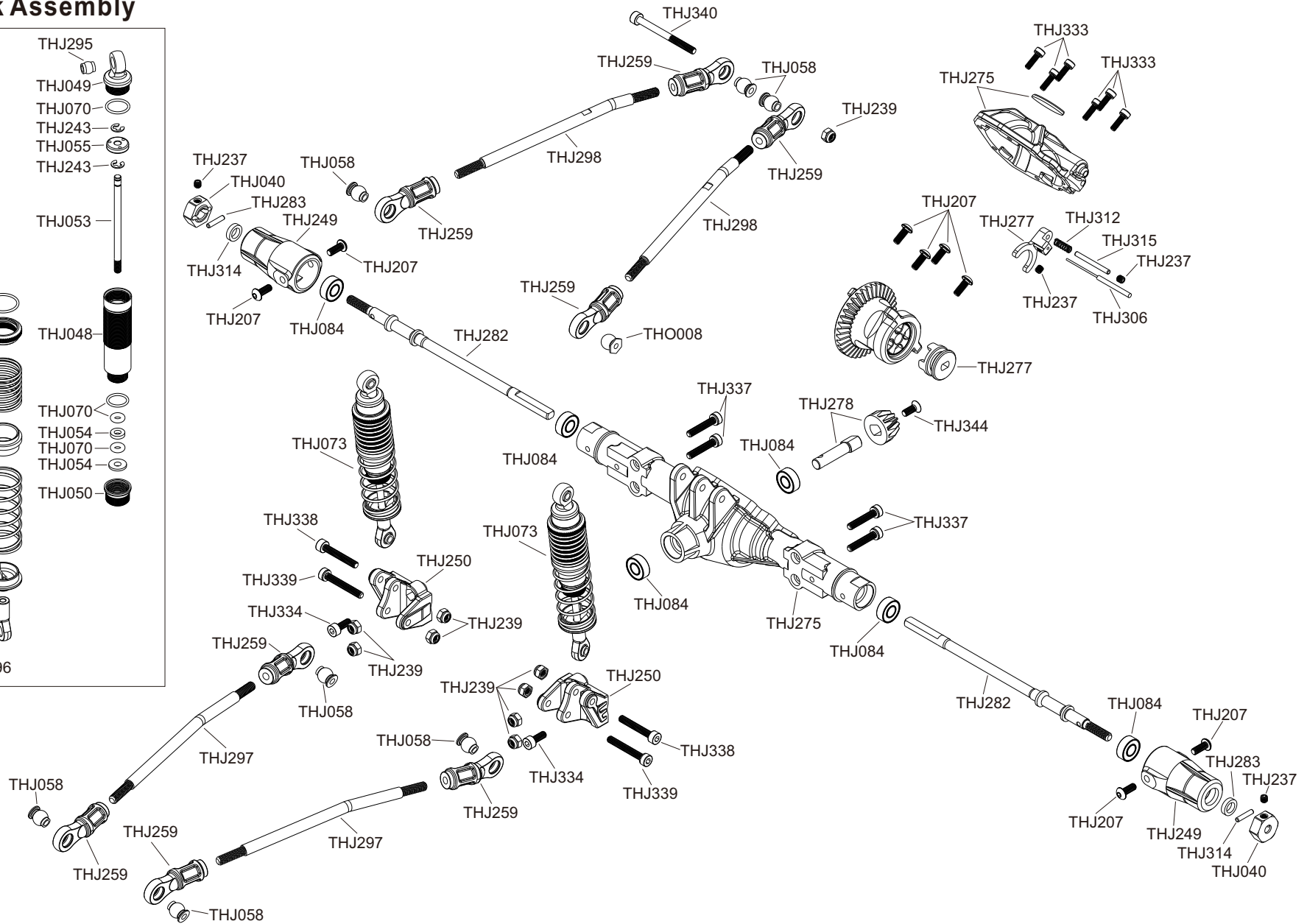
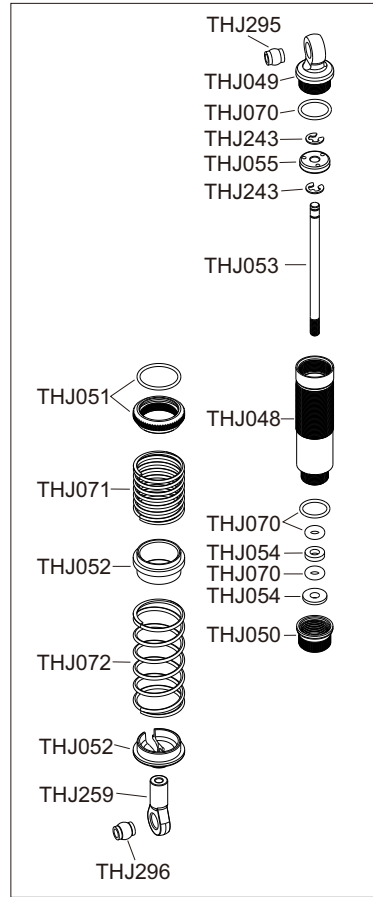
Parts List

THJ007	Pinion gear 14T(1pc)	THJ301	Servo threaded Stainless steel link(1pc)
THJ026	Slipper plate(1pc)	THJ302	Gearbox turnbuckle set(1pc)
THJ038	King pin bushing(1pc)	THJ303	Transfer case turnbuckle set(1pc)
THJ039	Drive shaft(2pcs)	THJ304	Servo mount plate(1pc)
THJ040	Hex hub 12mm(2pcs)	THJ305	Front cable set(1pc)
THJ048	Shock absorber body(2pcs)	THJ306	Rear cable set(1pc)
THJ049	Shock upper cap(2pcs)	THJ307	Chassis rail set(1pc)
THJ050	Shock cap nut(2pcs)	THJ309	Bearing 15×21×4mm(1pc)
THJ051	Adjusting nut(2pcs)	THJ310	E-clip 2mm(1pc)
THJ052	Spring mount set(2pcs)	THJ311	Bearing 5×8×2.5mm(1pc)
THJ053	Shock shaft(2pcs)	THJ312	Spring D2.6×12.7mm(1pc)
THJ054	Shock spacer(1pc)	THJ313	Spring(1pc)
THJ055	Shock piston(1pc)	THJ314	Pin 2.0×11mm(10pcs)
THJ058	Ball 7mm(5pcs)	THJ315	Pin 2.0×21mm(10pcs)
THJ070	O-ring(1pc)	THJ316	Pin 2.5×8mm(10pcs)
THJ071	Spring D17×30mm(2pcs)	THJ317	Pin 2.5×43mm(5pcs)
THJ072	Spring D17×40mm(2pcs)	THJ318	Pin 3×23mm(10pcs)
THJ073	Shock absorber completed set(2pcs)	THJ319	Antenna pipe set(1pc)
THJ074	Slipper spring(1pc)	THJ320	First gear set(1pc)
THJ075	Slipper pad(1pc)	THJ321	Self-lock device of diff lock(1pc)
THJ078	Brushed ESC 60A(1pc)	THJ322	M2.5×8 Button head screw black(10pcs)
THJ080	Velcro strap 20×200mm(1pc)	THJ324	M3×6 Button head screw black(10pcs)
THJ083	Bearing 5×10×4(1pc)	THJ325	M3×12 Button head screw(black)(10pcs)
THJ084	Bearing 5×11×4(3pcs)	THJ326	M3×18 Button head screw(black)(10pcs)
THJ086	Bearing 10×15×4(1pc)	THJ327	M3×20 Button head screw(black)(10pcs)
THJ095	servo 20kg(1pc)	THJ329	M3×28 Button head screw(black)(10pcs)
THJ203	M2.5×6 Button head screw(black)(10pcs)	THJ332	M4×45 Button head screw(black)(10pcs)
THJ204	M2.5×10 Button head screw(black)(10pcs)	THJ333	M2.5×8 Cap head screw(black)(10pcs)
THJ207	M3×8 Button head screw(black)(10pcs)	THJ334	M3×8 Cap head screw(black)(10pcs)
THJ209	M3×10 Button head screw(black)(10pcs)	THJ335	M3×12 Cap head screw(black)(10pcs)
THJ212	M3×14 Button head screw(black)(10pcs)	THJ336	M3×14 Cap head screw(black)(10pcs)
THJ213	M3×16 Button head screw(black)(10pcs)	THJ337	M3×16 Cap head screw(black)(10pcs)
THJ218	M2×6 Cap head screw(black)(10pcs)	THJ338	M3×20 Cap head screw(black)(10pcs)
THJ231	M3×10 Flat head screw(silver)(10pcs)	THJ339	M3×22 Cap head screw(black)(10pcs)
THJ237	M3×3 Set screw(black)(10pcs)	THJ340	M3×35 Cap head screw(black)(10pcs)
THJ239	M3 Nylon nut(silver)(10pcs)	THJ341	M2×12 Flat head screw(black)(10pcs)
THJ240	MNF30(10pcs)	THJ342	M2.5×6 Flat head screw(black)(10pcs)
THJ241	MNF40(10pcs)	THJ343	M3×6 Flat head screw(black)(10pcs)
THJ242	Washer 3.2×8×1mm(silver)(10pcs)	THJ344	M3×8 Flat head screw(black)(10pcs)
THJ243	E-clip 2.5mm(silver)(10pcs)	THJ345	M3×10 Flat head screw(black)(10pcs)
THJ244	M4×2.5×12mm screw shaft(10pcs)	THJ346	M3×12 Flat head screw(black)(10pcs)
THJ246	Differential Pads(10pcs)	THJ347	M3×14 Flat head screw(black)(10pcs)
THJ247	C Hub carrier set(1pc)	THJ349	M3×5 Set Screw(black)(10pcs)
THJ249	Rear axle lock-out(1pc)	THJ350	M2.5 Nylon Nut(black)(10pcs)
THJ250	Linkage seat(1pc)	THJ352	Washer 3×7×0.5mm(10pcs)
THJ252	2 speed gear box set(1pc)	THJ353	Washer 5×8×0.5mm(10pcs)
THJ253	60T Spur gear slipper set(1pc)	THJ354	Washer 5×9×0.8mm(10pcs)
THJ255	2 speed gear box brace(1pc)	THJ356	Washer 15×17×0.2mm(10pcs)
THJ256	Transfer box set(1pc)	THJ358	M2.2×8 Tp.Binder Head Screw(black)(10pcs)
THJ259	Linkage ball set(2pcs)	THJ359	TH2503 servo(4pcs)
THJ260	Servo arm set(1pc)	THJ360	550 Motor 28T(1pc)
THJ261	Servo arm(1pc)	THJ361	Dust proof set(1pc)
THJ262	Front bumper set(1pc)	THJ367	Gearshift pin(1pc)
THJ263	Rear bumper set(1pc)	THJ371	CVD(1PC)
THJ264	Side plates set(1pc)	THJ372	Bearing 7×11×3(1pc)
THJ265	Side frame set(1pc)	THJ373	Front bumper(1pc)
THJ266	Shock hoops set(1pc)	THJ374	Simulation body parts(1pc)
THJ267	Body mount set(1pc)	THJ375	Light cup(1pc)
THJ268	ESC dust cover(1pc)	THJ376	Lamp mount(1pc)
THJ271	PROCOMP 2.2 Method mesh wheels(2pcs)	THJ377	Roll cage(1pc)
THJ272	MARKMA tire with inner foam(2pcs)	THJ378	Clear body(1pc)
THJ273	Wheel Set(2pcs)	THJ379	Painted body(white)(1pc)
THJ274	Solid axle set front(1pc)	THJ380	Painted body(blue)(1pc)
THJ275	Solid axle set rear(1pc)	THJ381	Magnet set(1pc)
THJ276	Bearing seat(2pcs)	THJ383	M4×16 Button head screw(black)(10pcs)
THJ277	Differential lock set(2pcs)	THJ384	M4×22 Button head screw(black)(10pcs)
THJ278	12T Bevel gear set(2pcs)	THJ385	M2×4 Cap head screw(black)(10pcs)
THJ279	36T Bevel gear(2pcs)	THJ387	M3×18 Flat head screw(black)(10pcs)
THJ280	Diff gear set(2pcs)	THJ389	M4×10 Flat head screw(black)(10pcs)
THJ282	Straight axle Shaft(1pc)	THJ390	M4×12 Flat head screw(black)(10pcs)
THJ283	Spacer 5.1×7.9×2mm(10pcs)	THJ391	M2.5×4 Button head screw(black)(10pcs)
THJ284	Gear-Box First Shaft(1pc)	THJ395	Metal hook(1pc)
THJ286	Gear-Box Second Shaft(1pc)	THO003	Transfer case steel gear(20T)
THJ288	18T Spur gear(1pc)	THO004	Transfer case steel gear(25T)
THJ290	Transfer case rear output shaft(1pc)	THO007	Billet alum motor base(1pc)
THJ291	Shift link set(1pc)	THO008	Billet alum central base(1pc)
THJ292	Transfer box clutch link set(1pc)	THO009	Billet alum central battery box(1pc)
THJ293	Connecting seat(1pc)	THO011	Two speed Shifting fork and synchronizer(1pc)
THJ295	Ball 5.5mm(1pc)	THO012	2WD/4WD Shifting fork and synchronizer(1pc)
THJ296	Ball 5.8mm(5pcs)	THO013	Synchronizer gear(32T) for 2-Speed 2nd gear(1pc)
THJ297	Down threaded stainless steel link(2pcs)	THO014	Synchronizer gear(25T) for 2WD/4WD Shifting(1pc)
THJ298	Up threaded stainless steel link(2pcs)	THO015	Transfer case short drive shaft set(1pc)
THJ299	Front threaded stainless steel link(1pc)	THE001	TH-GT5 Transmitter(6channels)(1pc)
THJ300	Steering threaded Stainless steel link(1pc)		

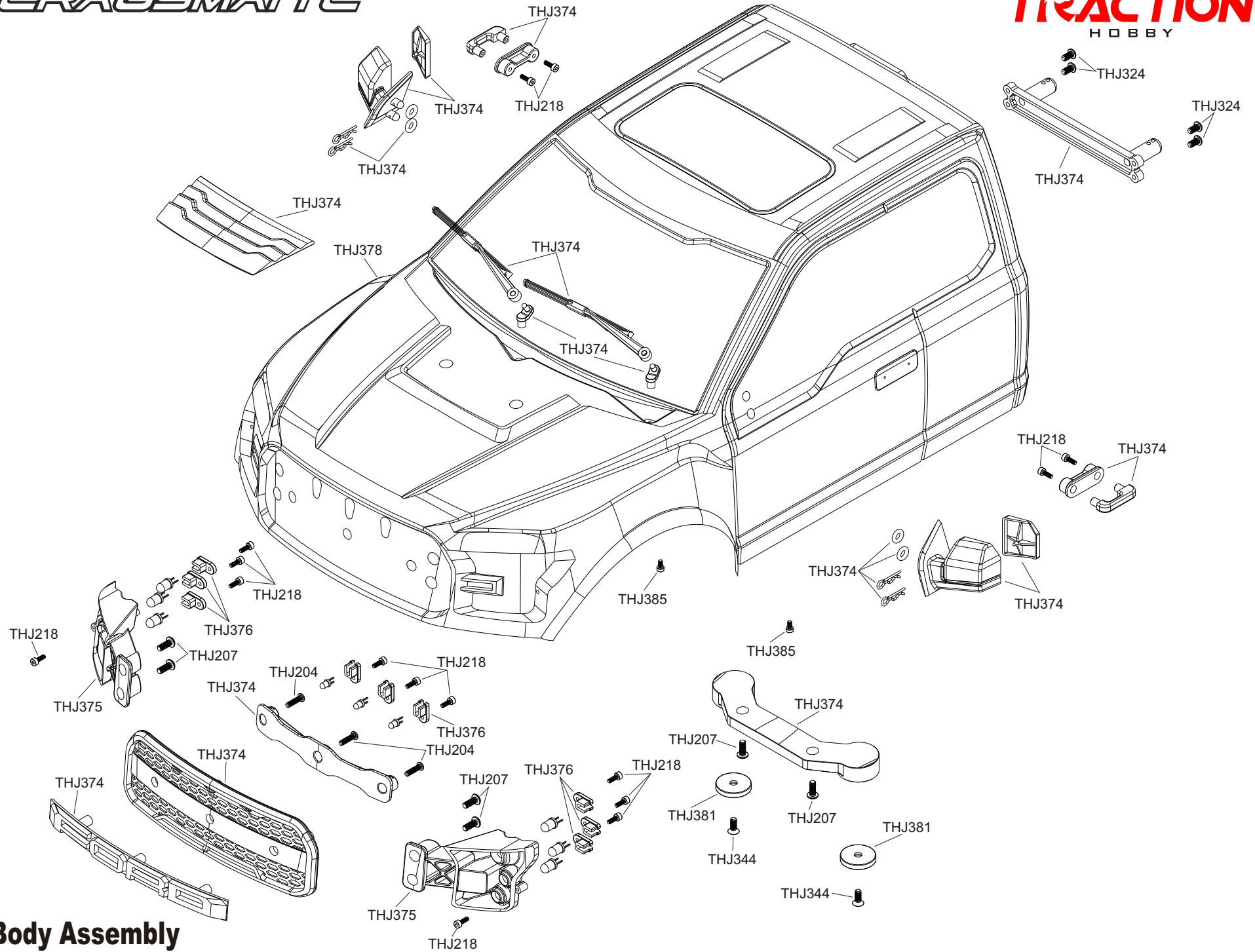


Transmission Assembly

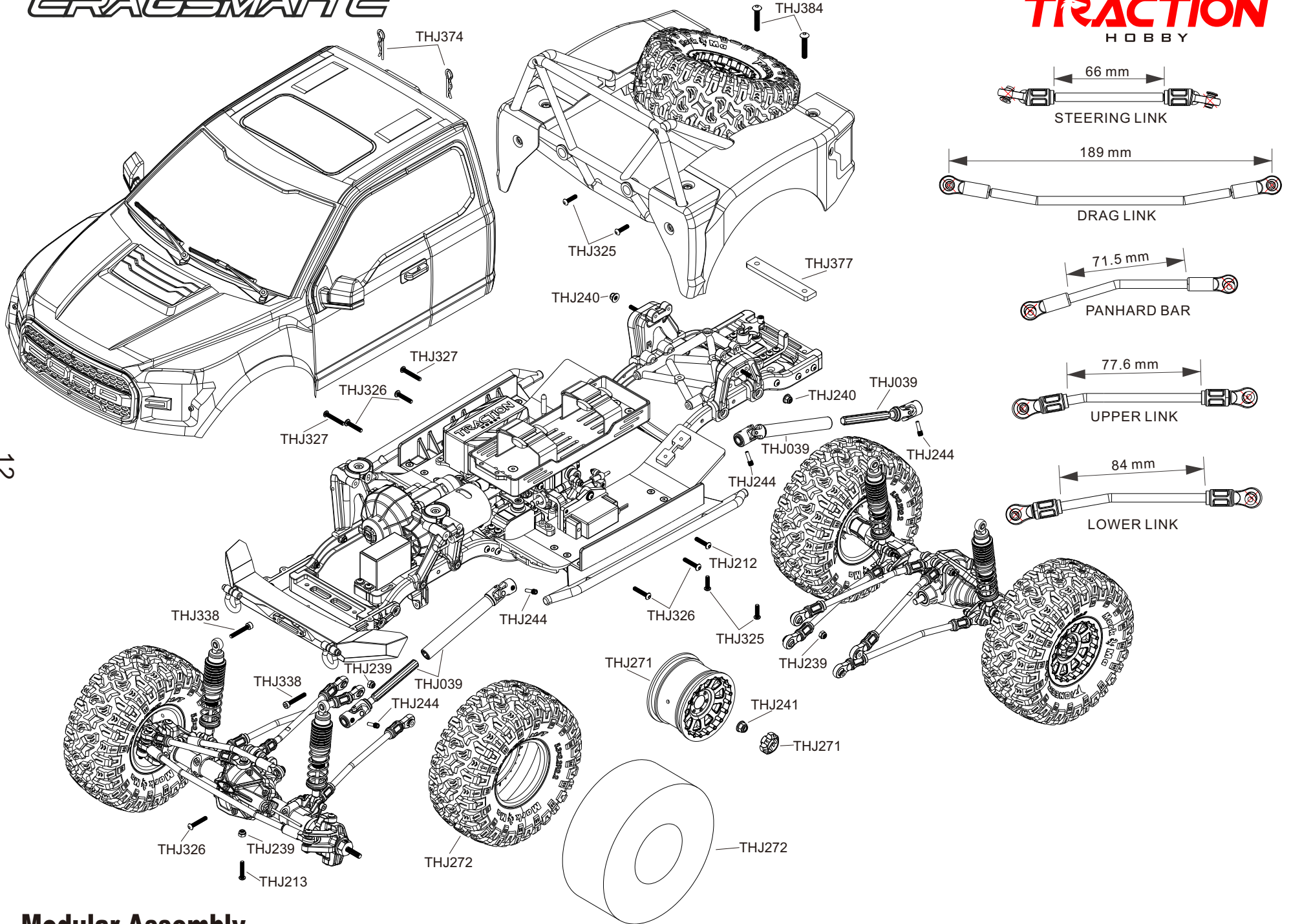
Shock Assembly



Rear Assembly



Body Assembly



TRACTION

HOBBY